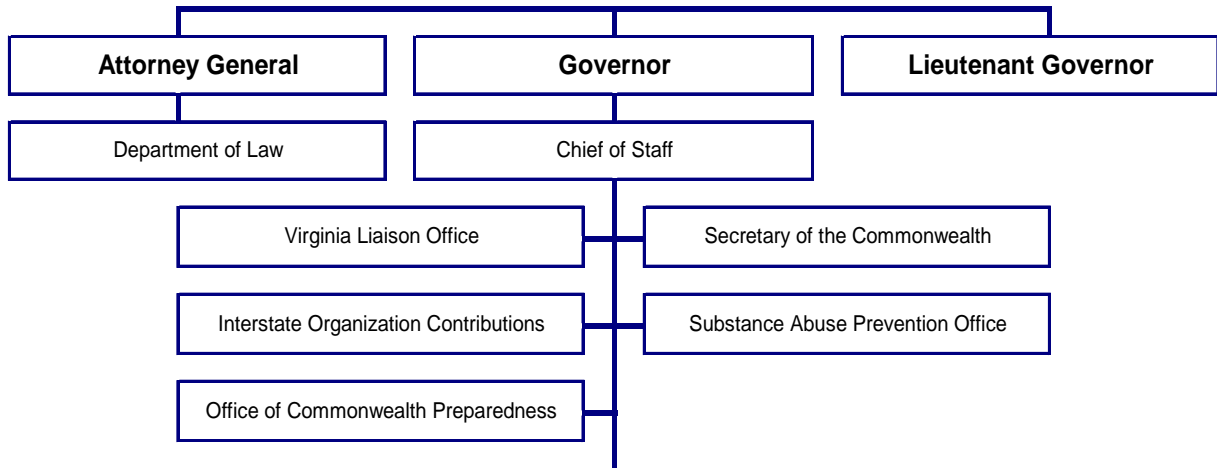


# Organization Charts



# Organization of Executive Branch of Government

As of June 30, 2006



## Secretary of Administration

Compensation Board  
 Council on Human Rights  
 Department of Charitable Gaming  
 Department of Employment Dispute Resolution  
 Department of General Services  
 Department of Human Resource Management  
 Department of Minority Business Enterprise  
 State Board of Elections

## Secretary of Agriculture and Forestry

Department of Agriculture and Consumer Services  
 Department of Forestry

## Secretary of Commerce and Trade

Board of Accountancy  
 Department of Business Assistance  
 Department of Housing and Community Development  
 Department of Labor and Industry  
 Department of Mines, Minerals and Energy  
 Department of Professional and Occupational Regulation  
 Virginia Economic Development Partnership  
 Virginia Employment Commission  
 Virginia Racing Commission  
 Virginia Tourism Authority

## Secretary of Finance

Department of Accounts  
 Department of Planning and Budget  
 Department of Taxation  
 Department of Treasury  
 Treasury Board

## Secretary of Education

Christopher Newport University  
 The College of William and Mary  
 Department of Education  
 Frontier Culture Museum of Virginia  
 George Mason University  
 Gunston Hall  
 Institute for Advanced Learning and Research  
 James Madison University  
 Jamestown-Yorktown Foundation  
 Jamestown 2007  
 The Library of Virginia  
 Longwood University  
 Norfolk State University  
 Old Dominion University  
 Radford University  
 Roanoke Higher Education Authority  
 The Science Museum of Virginia  
 Southern Virginia Higher Education Center  
 Southwest Virginia Higher Education Center  
 State Council of Higher Education for Virginia  
 University of Mary Washington  
 University of Virginia  
 Virginia College Building Authority  
 Virginia Commission for the Arts  
 Virginia Commonwealth University  
 Virginia Community College System  
 Virginia Military Institute  
 Virginia Museum of Fine Arts  
 Virginia Polytechnic Institute and State University  
 Virginia School for the Deaf and Blind at Staunton  
 Virginia School for the Deaf, Blind and Multi-Disabled at Hampton  
 Virginia State University

## Secretary of Natural Resources

Chesapeake Bay Local Assistance Department  
 Chippokes Plantation Farm Foundation  
 Department of Conservation and Recreation  
 Department of Environmental Quality  
 Department of Game and Inland Fisheries  
 Department of Historic Resources  
 Marine Resources Commission  
 Virginia Museum of Natural History

## Secretary of Health and Human Resources

Comprehensive Services for At-Risk Youth and Families  
 Department for the Aging  
 Department for the Blind and Vision Impaired  
 Department for the Deaf and Hard-of-Hearing  
 Department of Health  
 Department of Health Professions  
 Department of Medical Assistance Services  
 Department of Mental Health, Mental Retardation and Substance Abuse Services  
 Department of Rehabilitative Services  
 Department of Social Services  
 Office of the Inspector General  
 Virginia Board for People with Disabilities

## Secretary of Public Safety

Commonwealth's Attorneys' Services Council  
 Department of Alcoholic Beverage Control  
 Department of Correctional Education  
 Department of Corrections  
 Department of Criminal Justice Services  
 Department of Emergency Management  
 Department of Fire Programs  
 Department of Forensic Science  
 Department of Juvenile Justice  
 Department of Military Affairs  
 Department of State Police  
 Department of Veterans' Services  
 Virginia Parole Board

## Secretary of Technology

Innovative Technology Authority  
 Virginia Information Technologies Agency

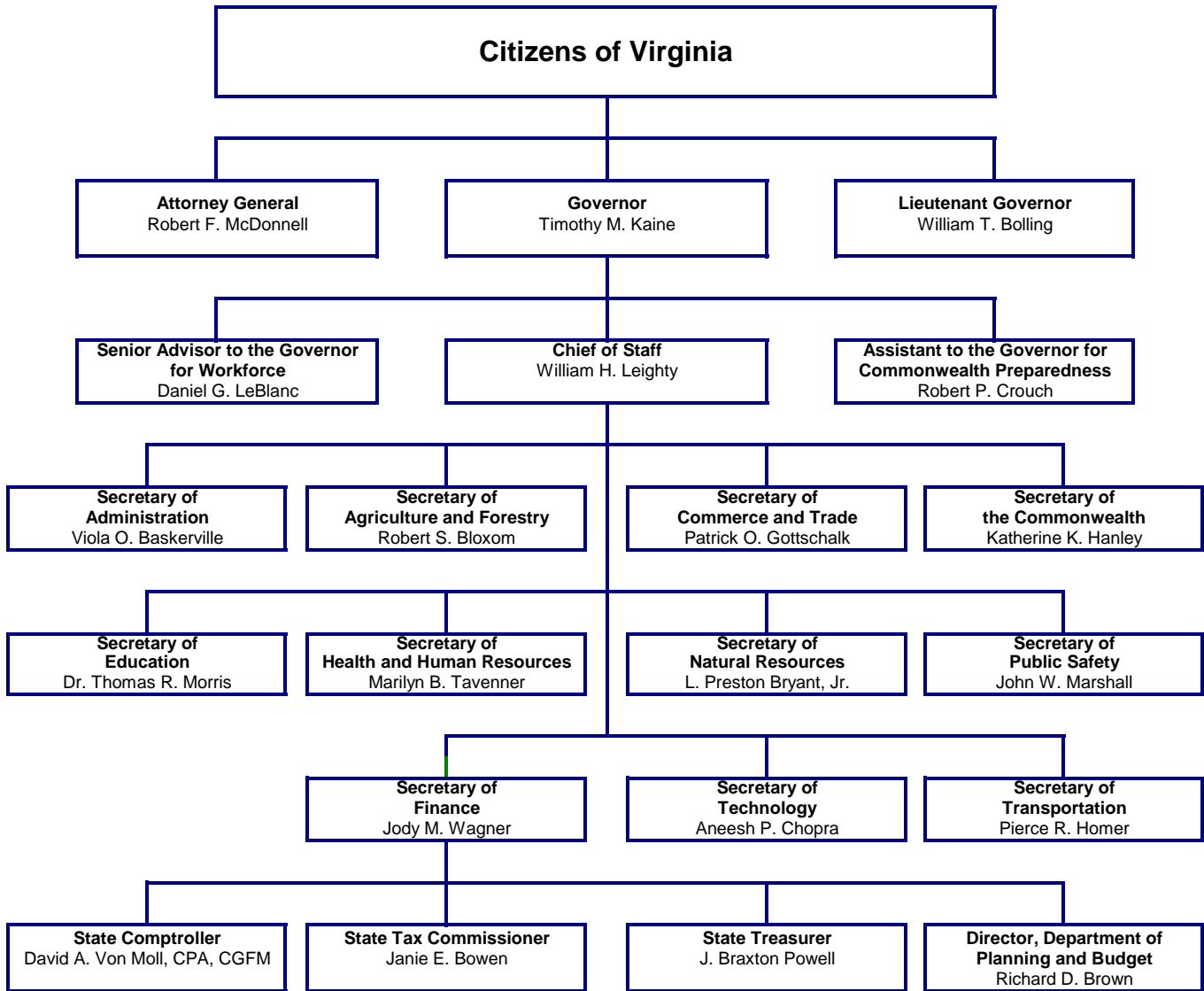
## Secretary of Transportation

Department of Aviation  
 Department of Motor Vehicles  
 Department of Rail and Public Transportation  
 Department of Transportation  
 Motor Vehicle Dealer Board  
 Virginia Port Authority

# Organization of Government

## Selected Government Officials - Executive Branch

As of December 15, 2006



# Organization of the Department of Accounts

As of December 15, 2006

